

DOUGLAS MOUNTAIN

Words by Arnold Sundgaard
Music by Alec Wilder

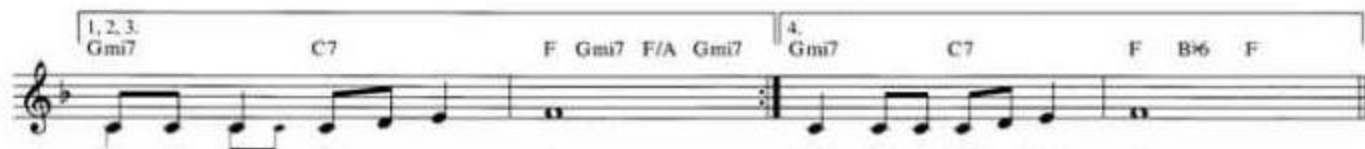
Tenderly



| | | | |
|--------------------------------|-------------------------|-----------------------------|---------|
| 1. Ce - dars are grow - in' on | Doug - las Moun - tain, | Ce - dars are grow - in' so | high; |
| 2. Snows are a - fall - in' on | Doug - las Moun - tain, | Snows are a - fall - in' so | deep; |
| 3. Trim - min' the wicks — on | Doug - las Moun - tain, | Shin - in' my chim - ney so | bright; |
| 4. Sun's go - in' down — on | Doug - las Moun - tain, | Nights are so long and so | cold; |



| | | | |
|-----------------------------|-------------------------|-----------------------------|--------|
| Ce - dars are grow - in' on | Doug - las Moun - tain, | Join - in' the earth to the | sky, |
| Snows are a - fall - in' on | Doug - las Moun - tain, | Put - tin' the bears to | sleep, |
| Trim - min' the wicks — on | Doug - las Moun - tain, | So God can bring the | night, |
| Sun's go - in' down — on | Doug - las Moun - tain, | And I am feel - in' | old, |



| | | | |
|-----------------------------|--------|---------------------|------|
| Join - in' the earth to the | sky, | And I am feel - in' | old. |
| Put - tin' the bears — to | sleep, | | |
| So God can bring — the | night, | | |

Erwin Music Studio